

3D LED Flex Range

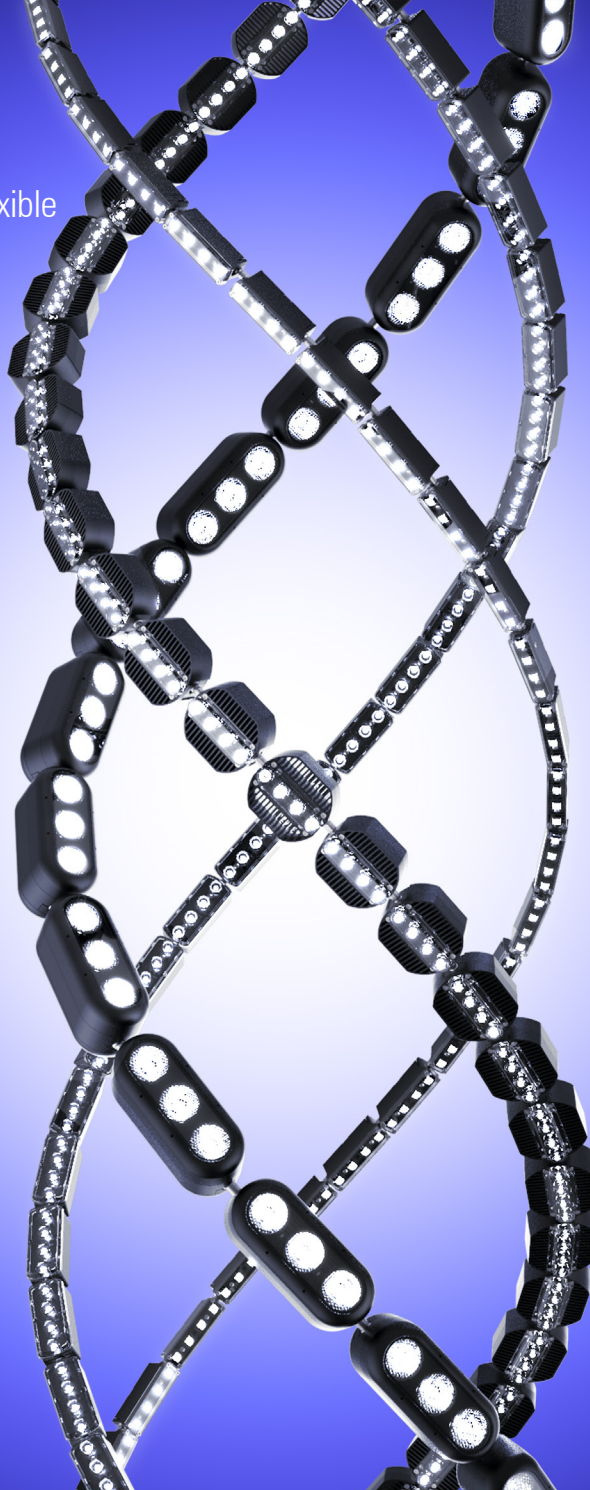
Modular + Linear + 3D Flexible

The multi-award winning 3D LED Flex system has developed from a custom solution for a Zaha Hadid designed building into a comprehensive modular linear lighting system with a vast range of options.

Ideal for use in a wide range of interior, exterior and underwater lighting projects where curved lines of light are needed to illuminate non-linear building surfaces, columns and domes.

The patented mechanical joint structure allows the individual modules to be bent and twisted in three dimensions to follow the most complex building contours.

- Flexible in 3 Dimensions & hand-bendable and lockable on-site
- Four sizes, for projects of all sizes. Up to 11,000 lumens per mtr from the 200 size down to 4,000 lumens per mtr from the 25.
- IP ratings of IP20, IP44, IP65, IP66 and IP68 submersible
- A wide range of LED light engine, reflector and lens options available. White light, RGB, RGBW, and dynamic white options available
- Wide range of bracketry and anti-glare accessories. Custom lengths up to 2.5 mtrs based on a 100mm or 200mm module length



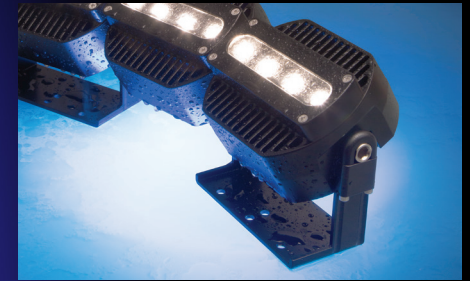
3D LED Flex 200

- Up to 11,000 Lumens per Mtr
- Up to 25 Watts per 200mm module
- IP ratings available: IP20, IP65 & IP66



3D LED Flex 100

- Up to 9,500 Lumens per Mtr
- Up to 11 Watts per 100mm module
- IP ratings available: IP20, IP65 & IP66



3D LED Flex 40

- Up to 5,000 Lumens per Mtr
- Up to 5 Watts per 100mm module
- IP ratings available: IP20, IP44, IP65, IP66 & IP68



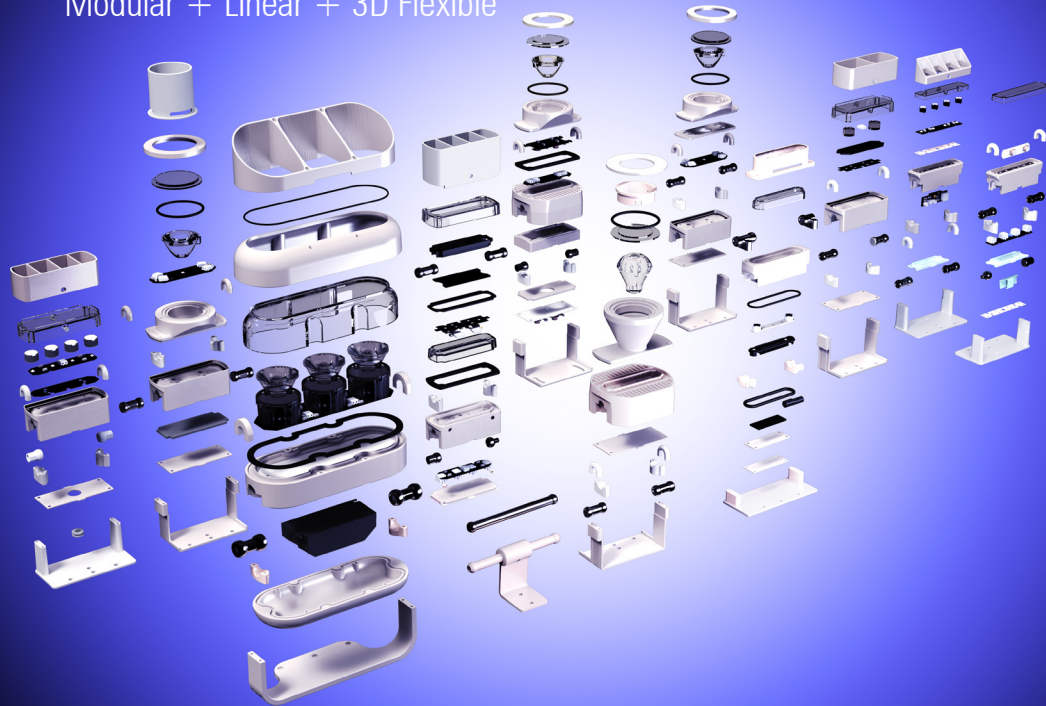
3D LED Flex 25

- Up to 4,000 Lumens per Mtr
- Up to 4 Watts per 100mm module
- IP ratings available: IP20, IP65, IP66 & IP68



3D LED Flex Range

Modular + Linear + 3D Flexible



The 3D LED Flex range is modular and the various components can be assembled together in different combinations to meet project requirements. Every element from the light engine and optics, to the anti-glare accessories and bracketry can be customised. We are continuously developing new components for the system as the scope of our projects expands.



Twin module



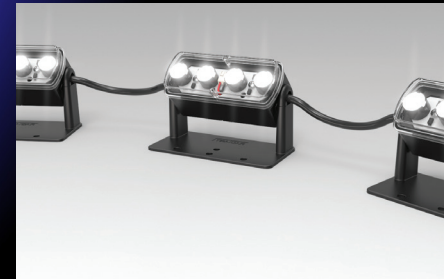
Two-level bracket



Single modules on adjustable-angle brackets



Wider spaced modules with extended ball-joints



Single modules with flexible cable link



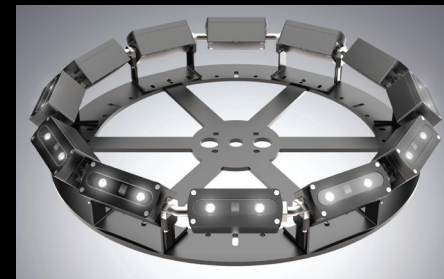
Customisable anti-glare accessories



Custom finishes for metalwork and louvres



Custom light engines and optics for each project



Custom bracket solutions



Strip lengths up to 2.5 Mtrs